



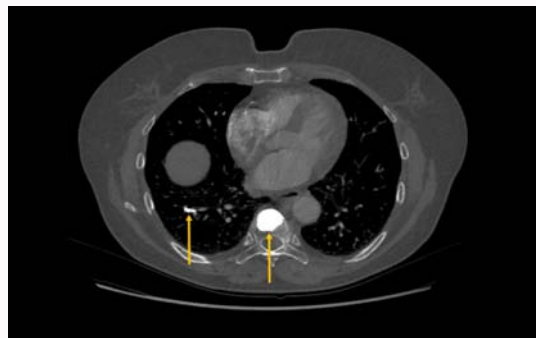
## Image in Clinical Medicine: Cement Pulmonary Embolism

Asarisi F, Heme N, Fournier E and Ferrari E\*

Department of Cardiology, Pasteur University Hospital, Nice, France

### Clinical Image

A 65-year-old woman was treated for vertebroplasty (cement injection). Twenty-four hours after the procedure, she complains chest pain. A CT scan is performed which reveals the presence of highly radiopaque material in a right basal segmental artery. On the same image section of the CT scan, the density of this material is strictly identical to that of the cement of the treated vertebra.



**Figure 5:** Effects of *Terminalia arjuna* extracts on 2-deoxy-D-[<sup>3</sup>H] glucose transport. Results are mean  $\pm$  SEM of 4 separate observations. \*\*\* $P < 0.001$  compared with incubations in the absence of insulin. \*\*\* $P < 0.001$  compared to  $10^{-9}$  M insulin alone. <sup>a</sup> $P < 0.05$  compared to *Terminalia arjuna* incubations without insulin.

### OPEN ACCESS

#### \*Correspondence:

Emile Ferrari, Department of Cardiology, Pasteur University Hospital, 30 av de la voie Romaine, 06001 Nice, France,

E-mail: ferrari.e@chu-nice.fr

Received Date: 06 Apr 2021

Accepted Date: 30 Apr 2021

Published Date: 03 May 2021

#### Citation:

Asarisi F, Heme N, Fournier E, Ferrari E. Image in Clinical Medicine: Cement Pulmonary Embolism. *Ann Clin Case Rep.* 2021; 6: 1944.

ISSN: 2474-1655

Copyright © 2021 Ferrari E. This is an open access article distributed under the Creative Commons Attribution License, which permits unrestricted use, distribution, and reproduction in any medium, provided the original work is properly cited.